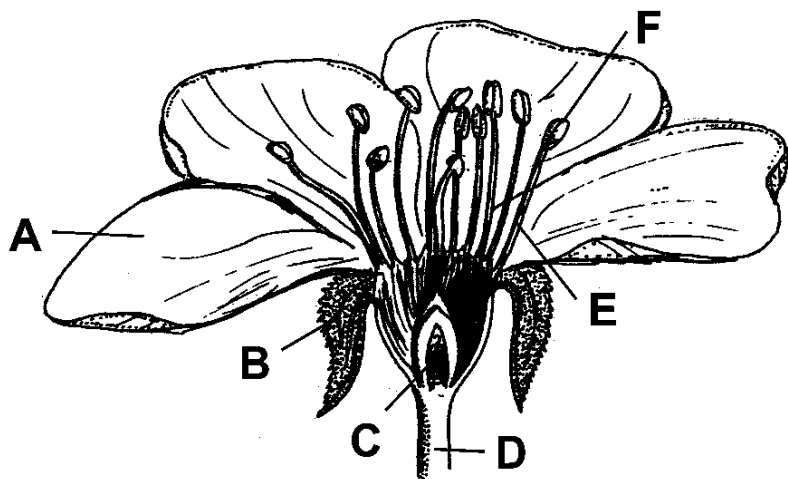


LESSON 1 - ASSIGNMENT

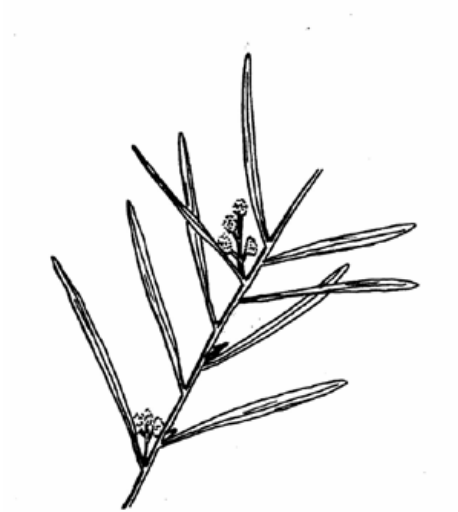
1. Here is a diagram of a typical flower. Type the appropriate letter next to the corresponding plant part:



- Petals []
- Anthers []
- Filaments []
- Pedicel []
- Ovary []
- Sepals []

2. Here are some unlabelled diagrams of plant leaves. Type the appropriate description next to the corresponding leaf shape, leaf arrangement, leaf margin, leaf base or leaf tip description. Remember that if a scientific term does not accurately describe the leaf shape, it is OK to use plain English – for example: “heart shaped”.

Diagram 1: Acacia sp.



Overall leaf shape:

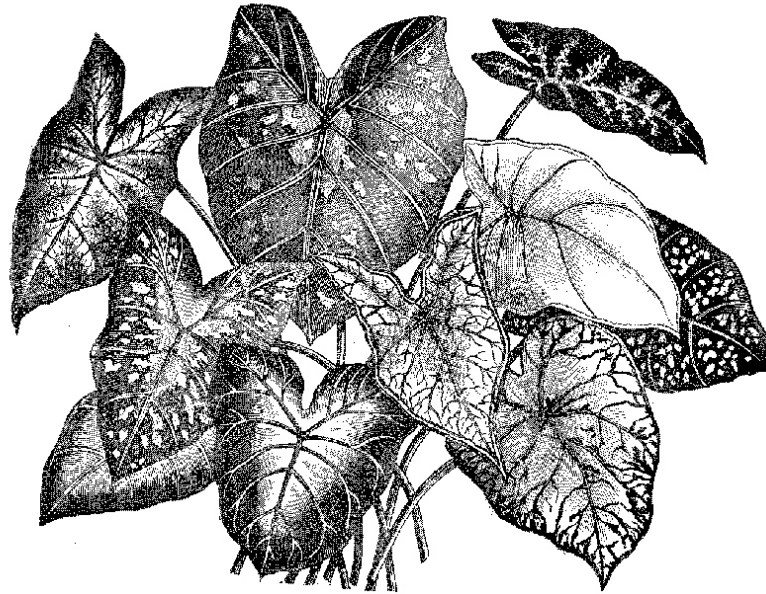
Leaf base description:

Leaf tip description:

Leaf attachment to stem:

Leaf margin:

Diagram 2:



Overall leaf shape:

Leaf base description:

Leaf margin:

3. Give the scientific names of ten (10) different plant species not mentioned so far in this lesson. For each indicate which name is the genus, which is the species and (if applicable) which is the variety or hybrid name. Indicate also which family each plant belongs to.

	Family	Genus	Species	Hybrid/Cultivar name
1				
2				
3				
4				
5				
6				
7				
8				
9				
10				

4. Below are examples of Plant Review sheets.

In each lesson you are required to submit Plant Review sheets covering 8 different plants.

While this aspect of the course is important for building your plant knowledge, it is important to not let this task overwhelm you. Allocate a minimum of 1.5 hours and a maximum of 3 hours to completing your plant review sheets for each lesson; and submit whatever information you are able to get together within this time frame. If you are struggling, be sure to indicate that to your tutor.

The information you submit does not need to be comprehensive, but it should be sufficient for you to start building a familiarity with each plant you review.

For this exercise, look at plants in your garden, botanic gardens, magazines, books, or the internet. There is many plant directories on the internet which you might use (eg. <http://www.acsgarden.com/encyclopedia/>); however, we expect students to go beyond the information contained in any one directory or resource.

You should select a cross section of different types of plants (eg. Trees, shrubs, annuals, vegetables, fruit, herbs, ground covers, indoor plants). We will not accept a selection which is only one type of plant, but you can choose to have up to half of your selection from the same plant group.

After selecting plants to deal with, then prepare plant ID sheets for the 8 plants of your choice. You must include an illustration or pressing of each plant. This may be in the form of either:

- a botanical drawing
- a photograph of the plant
- a URL showing an image of the plant
- a pressing of the plant
- a scanned image of the pressing you did of the plant.

Examples of how you might present Plant Review sheets:

PLANT SPECIMEN NO.1

Plant Family:

Genus:

Species:

Common Name:

Brief plant description:

Flowers:

Method(s) of Propagation:

Hardiness:

Culture:

Location of illustration/photograph on the internet:

EXAMPLE OF A PLANT IDENTIFICATION WORKSHEET

Plant No. 1.

Plant Family.....	Sketch Or Photo
Species.....	
Genus.....	
Common Name.....	
How & Where to Plant it.....	
Height..... Spacing.....	
Hardiness	
Appearance	
Uses	
Culture	
Pest & Disease	
Harvest & Post Harvest	

Plant No. 2.

Plant Family.....	Sketch Or Photo
Species.....	
Genus.....	
Common Name.....	
How & Where to Plant it.....	
Height..... Spacing.....	
Hardiness	
Appearance	
Uses	
Culture	
Pest & Disease	
Harvest & Post Harvest	

NOTE: This is a sample only! Change it as needed to suit your situation.